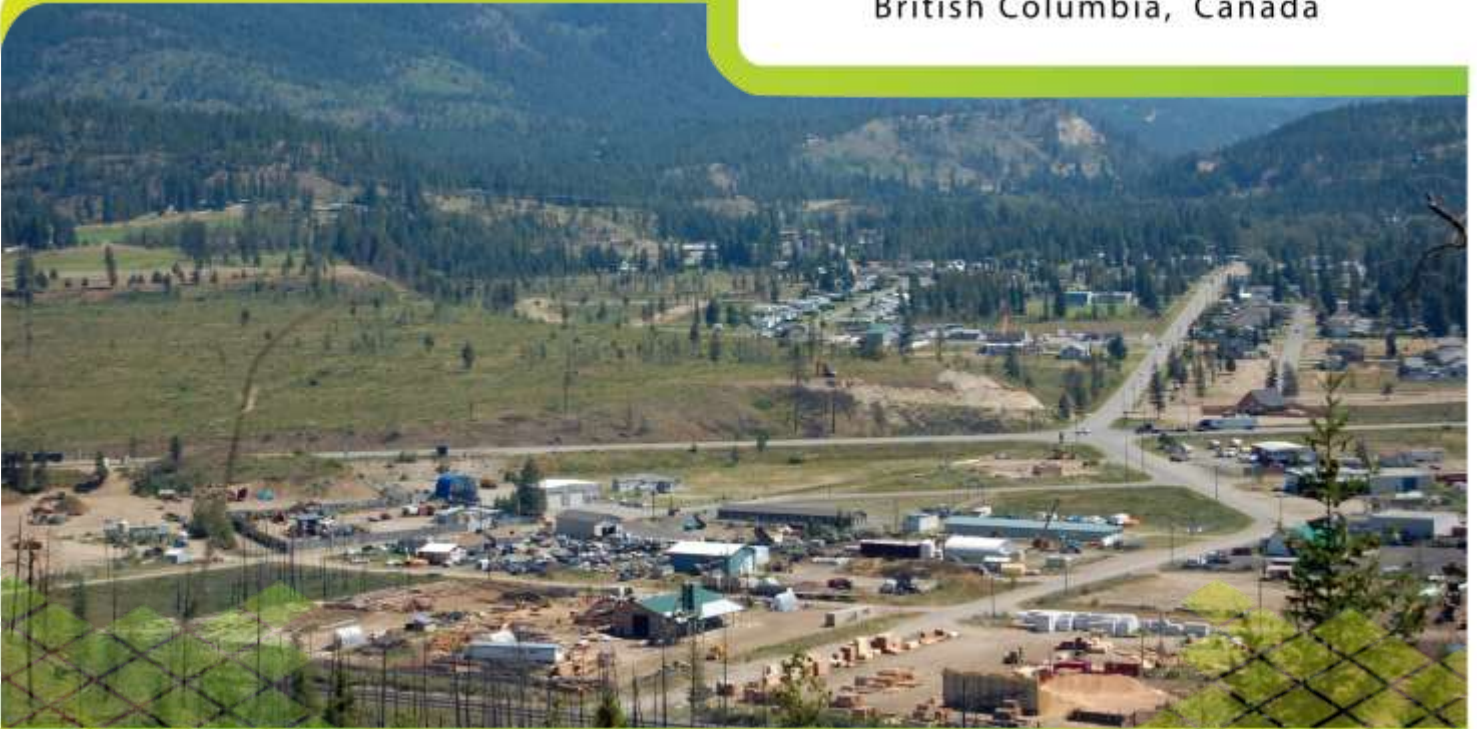


District of

Barriere & Area



British Columbia, Canada



Investment - Ready Community Profile



BRITISH COLUMBIA BUSINESS ADVANTAGE

British Columbia is a strategically located, resource-rich economy with many competitive advantages and incentives for business.



PACIFIC OCEAN

- A** Airport
- P** Port
- 16** Highway

British Columbia has one of the most attractive investment climates for business in North America.

Manufacturers, for example, enjoy benefits such as:

- **Strong economic fundamentals** and market opportunities associated with major, long-term projects
- **Low Tax Rates** (personal and corporate) that rank BC among the lowest in Canada – complemented by sales tax exemptions on machinery and tax credits for research and development expenditures
- **Competitive Operating Costs** including low cost electricity relative to elsewhere in Canada or the US
- **Competitive Wage Rates** reflecting a balanced and growing labour pool
- **Growing Labour Supply** with government initiatives that are driving labour mobility into BC and training our existing workforce assets
- **Welcoming Communities** that keenly encourage new manufacturing and service investments
- **Financial Incentives** for capital investments and job creation in northern BC (up to \$5,000 per new job). *Contact Northern Development Initiative Trust.*

Welcome to the District of Barriere!

Barriere is a safe, friendly community that understands the needs of business and strives to provide a climate for success. We have a sustainable community plan and a progressive economic development model with an eye on the future.

Barriere has the foresight to provide revitalization tax exemptions integrated with progressive land use planning to provide the best possible chance of success no matter what your vision may be.

Barriere's strong business and industrial base along with the abundant resource and recreational opportunities in the surrounding area contribute to a diverse and thriving economy. A blend of pre-zoned, serviced and fully accessible industrial, small business and agricultural opportunities of various sizes are available as well as ample affordable employee housing options.

Right in Barriere you will find a medical clinic, a medical lab and an ambulance station as well as a variety of shopping and associated services easily available. There are numerous parks, ball diamonds, an outdoor rink, a Bandshell, a curling facility, rodeo stadium and a world class Agriplex . The surrounding area offers various agri-tourism opportunities, First Nation heritage sites as well as unparalleled outdoor recreation.

Whatever your needs, either in the District of Barriere or in the surrounding Thompson Nicola Regional District – Area O, we are here to welcome you and provide you with the tools for success.

Mayor Virginia Smith
District of Barriere

PO Box 219
4936 Barriere Town Road
Barriere, BC V0E 1E0
250-672-9751



CONTENTS

1. Demographics	6
Population	6
Household Income	6
Workforce Education Attainment	7
Language Knowledge	7
2. Labour Force	8
Employment by Industry	8
Top Employers	9
Average Income By Occupation – Thompson Okanagan Kootenay Area	10
Labour Force	11
Employment Rate	11
Labour Participation Rate	11
Commuting	11
3. Payroll Costs.....	12
Workers Compensation – 2013	12
Employment Insurance – 2013	12
Social Insurance (Canada Pension Plan) – 2013	13
4. Higher Education	14
Four Year Institutions	14
5. Transportation	16
Major Transportation Routes	16
Highways	20
Northern & Southern Corridor Specifications	21
Railroads	22
Commercial Airports	23
Ports	24
Port Shipping Distances	28
6. Industrial & Commercial Land Use.....	29
Land Zoned and Designated in Official Community Plan	29
Local Permit Approvals	30
7. Utilities	31
Water System – District of Barriere	31
Waste Water System – District of Barriere	32
Licensed Hazardous Materials Disposal	32

Electric Power	33
Natural Gas	Error! Bookmark not defined.
Telecommunications	35
8. Business Support Services	36
9. Government	37
Municipal Government	37
First Nations Government	37
Regional District	37
Provincial	37
Provincial Government Representation	38
Federal Government Representation	38
10. Housing	39
Housing Characteristics	39
Average Housing Values	39
11. Taxation	40
Corporate Income Tax	40
Personal Income Tax	40
Sales / Use Tax	40
Sales Tax Rate by Utility	41
Property Tax – District of Barriere	42
Property Tax – Electoral Area O	42
12. International Resources	43
Investment and Business Support Offices	43
Financial Institutions	44
Employment Assistance	44
Air Transportation Service	45
13. Quality of Life	46
Climate	46
Culture	47
Health	51

1. DEMOGRAPHICS

POPULATION

BARRIERE & AREA

Population By Age Group	Population (2011)	Distribution
Under-18	560	17.9%
18-34	345	11.1%
35-54	815	26.1%
55-74	1,135	36.4%
75-Older	265	8.5%
Total:	3,120	100.0%
Median Age:	52.2	

BRITISH COLUMBIA

Population By Age Group	Population (2011)	Distribution
Under 18	952,525	21.6%
18-34	844,590	19.2%
35-54	1,299,845	29.5%
55-74	985,990	22.4%
75-Older	317,100	7.2%
Total:	4,400,050	100%
Median Age:	41.9	

Data Source: StatsCan – 2011 Census – “Age Characteristics” – www12.statcan.gc.ca/census-recensement/index-eng.cfm

HOUSEHOLD INCOME

Household Income

2006

Number of Households

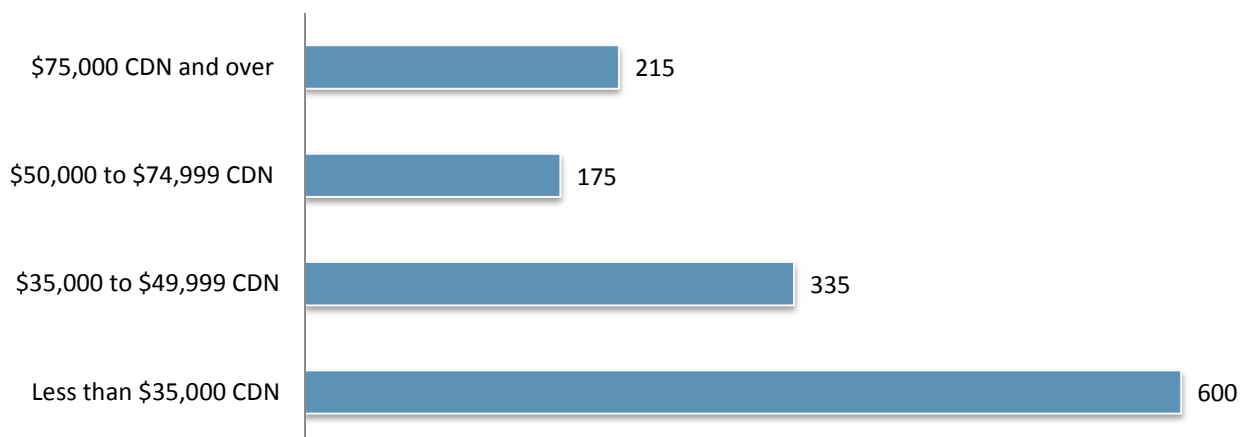
1,325

Median Income - All Families

\$33,747

Data Source: StatsCan – 2006 Census – “Selected Family Characteristics” – www12.statcan.gc.ca/census-recensement/index-eng.cfm

INCOME DISTRIBUTION



Data Source: BC Stats - "Census Profiles 2006" - www.bcstats.gov.bc.ca/StatisticsBySubject/Census/2006Census/ProfilesA.aspx

WORKFORCE EDUCATION ATTAINMENT

Level of Education	Number Attained	Distribution
High School Diploma Only	885	33%
College/University Certificate/Diploma	380	15%
Less than High School Diploma	755	29%
Apprenticeship/Trades Certificate/Diploma	395	15%
University Bachelors Degree	120	5%
University Graduate Degree/Certificate	30	1%
University Medical/Dentistry/Optometry Degree	10	1%

Data Source: StatsCan – 2006 Census – “Education”– www12.statcan.gc.ca/census-recensement/index-eng.cfm

LANGUAGE KNOWLEDGE

Languages Spoken	Citizens
English	2,840
German	85
French	60
Dutch	20
Polish	15
Finnish	10
Japanese	10
Punjabi	10
Ukrainian	10
Czech	5
Danish	5
Spanish	5
Thai	5
Hungarian	5
Other	15

Data Source: StatsCan – 2011 Census – “Mother Tongue”– www12.statcan.gc.ca/census-recensement/index-eng.cfm



2. LABOUR FORCE

EMPLOYMENT BY INDUSTRY

BARRIERE & AREA

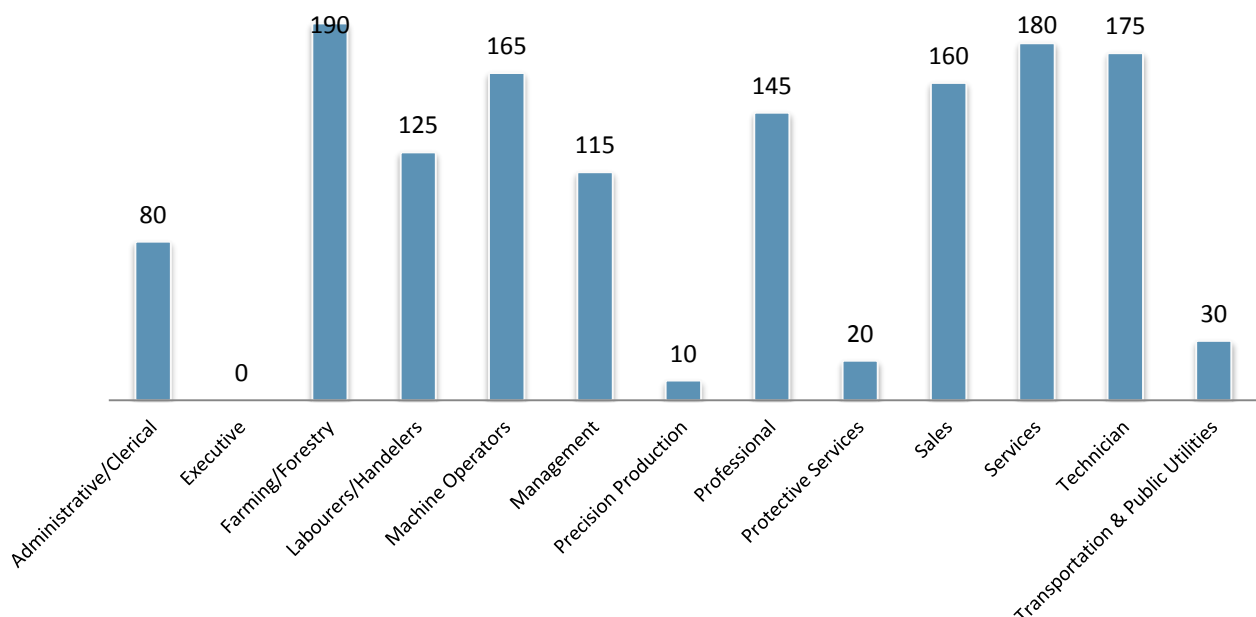
Sector (Industry)	Number
Forestry & Logging	265
Mining and Oil & Gas	25
Construction	190
Manufacturing	180
Transportation, Warehousing & Public Utilities	30
Wholesale Trade	25
Retail Trade	75
Services	525
Finance, Insurance & Real Estate	20
Government	20
Total	1,415

BRITISH COLUMBIA

Sector (Industry)	Number
Forestry & Logging	61,210
Mining and Oil & Gas	25,450
Construction	181,510
Manufacturing	148,810
Transportation, Warehousing & Public Utilities	131,890
Wholesale Trade	90,560
Retail Trade	266,265
Services	1,106,670
Finance, Insurance, Real Estate & Leasing	203,910
Government	143,875
Total	2,354,245

Data Source: BC Stats - "Census Profiles 2006" - www.bcstats.gov.bc.ca/StatisticsBySubject/Census/2006Census/ProfilesA.aspx

EMPLOYMENT BY OCCUPATION



Data Source: BC Stats - "Census Profiles 2006" - www.bcstats.gov.bc.ca/StatisticsBySubject/Census/2006Census/ProfilesA.aspx

TOP EMPLOYERS

Company	Sector	Ownership	Website
Gilbert Smith Forest Products Ltd.	Forestry	Private	www.gsfpcedar.com
School District No. 73	Education	Public	www3.sd73.bc.ca
Stamer Logging Ltd.	Forestry	Private	

Data Source: District of Barriere – www.barriere.ca



AVERAGE INCOME BY OCCUPATION – THOMPSON OKANAGAN KOOTENAY AREA

Occupation	Median wage 2013 (\$/Hour)(\$CDN)
Accounting and Related Clerks	\$20.22
Administrative Officers	\$21.37
Bookkeepers	\$18.81
Business Development Officers and Marketing Researchers and Consultants	\$26.00
Carpenters	\$23.00
Construction Trades Helpers and Labourers	\$19.00
Delivery and Courier Service Drivers	\$15.00
Electronic Service Technicians (Household and Business Equipment)	\$22.86
Film and Video Camera Operators	\$23.54
Financial Auditors and Accountants	\$27.40
Gas Fitters	\$22.50
Heavy Equipment Operators (Except Crane)	\$25.27
Material Handlers	\$20.00
Mining Engineers	\$29.07
Primary Production Managers (Except Agriculture)	\$30.00
Producers, Directors, Choreographers and Related Occupations	\$25.91
Purchasing Agents and Officers	\$24.81
Railway and Yard Locomotive Engineers	\$32.05
Shippers and Receivers	\$14.92
Supervisors, Recording, Distributing and Scheduling Occupations	\$21.75
Support Occupations in Motion Pictures, Broadcasting and the Performing Arts	\$19.13
Tailors, Dressmakers, Furriers and Milliners	\$13.49
Telecommunications Installation and Repair Workers	\$30.00
Telecommunications Line and Cable Workers	\$26.98
Theatre, Fashion, Exhibit and Other Creative Designer	\$21.87
Truck Drivers	\$23.00
Welders and Related Machine Operators	\$27.60

- For a complete list of Wages and Salaries in Thompson-Nicola BC visit the link below www.labourmarketinformation.ca

LABOUR FORCE

	Number
Total Population 15 and over	2,570
In Labour Force	1,415
Employed	1,300
Unemployed	115

Data Source: StatsCan – 2006 Census – “Labour Force Activity”

EMPLOYMENT RATE

	% of Population
Unemployment Rate	8.1%
Labour Participation	55.1%

Data Source: StatsCan – 2006 Census – “Labour Force Activity”

LABOUR PARTICIPATION RATE

	Labour Participation Rate
Male	59.8%
Female	50.2%

Data Source: StatsCan – 2006 Census – “Labour Force Activity”



COMMUTING

Place of Residence	Place of Work	Number of People
Thompson-Nicola Area P	Thompson-Nicola Area O	20
Thompson-Nicola Area O	Thompson-Nicola Area O	515
Kamloops	Thompson-Nicola Area O	35

Data source: Stats Canada - 2006 Census - “Commuting Flow”

3. PAYROLL COSTS

WORKERS COMPENSATION – 2013

		Notes
Average Cost of All Manufacturing Per \$100 Payroll	\$1.91 CDN	Rates set by employer's business activity. Applies up to maximum gross earnings of \$75,700 per year.
Average Rate for Office Workers Per \$100 Payroll	\$0.20 CDN	There is no separate rating for office occupations in BC- the applicable industry rating applies to all workers. Rates for Business Services range from \$0.10-\$0.79 per \$100 of payroll. Average of \$0.34.
Maximum Weekly Benefit (Net)	\$999.68 CDN	Maximum per employee set at 90% of average net earnings (after deductions for income taxes, Canada Pension Plan & Employment Insurance), up to maximum wage of \$75,700 per year.

Data Source: WorkSafeBC – www.worksafebc.com

EMPLOYMENT INSURANCE – 2013

		Notes
Taxable Base		Based on gross payroll up to a gross per worker salary of \$47,400 per year.
Percentage Rate (Employer Premium)		
▪ Employee Rate	1.88%	Maximum annual contribution per worker is \$839.97.
▪ Employer Rate	2.63%	Maximum annual contribution per worker is \$1,247.57.
▪ Maximum Weekly Benefits	\$501.00 CDN	

Data source: Service Canada - 2013 Premium Rates - www.servicecanada.gc.ca/eng/sc/ei/benefits/regular.shtml

SOCIAL INSURANCE (CANADA PENSION PLAN) – 2013

		Notes
Taxable Base	Gross Payroll \$3,500 CDN	Based on annual gross salary up to \$51,100, basic exemption of \$3,500. Both employers and employees are required to contribute to the Canada Pension Plan.
Employee/Employer Contribution	4.95%	Employer premium equal to employee premium.
Maximum Annual Employer Contribution Per Employee	\$2356.20 CDN	Employer contribution matches employee contribution.
Rate	4.95%	
Maximum Annual Self Employed Contribution	\$4712.40 CDN	

Data Source: Service Canada – www.servicecanada.gc.ca/eng/isp/cpp/posttrrben/contributors_after65.shtml



4. HIGHER EDUCATION

FOUR YEAR INSTITUTIONS

Institution	Thompson Rivers University
Campus/Address	Box 3010 900 McGill Road Kamloops, BC V2C 5N3 Tel: 250-828-5000
Other Campuses	Williams Lake
Website	www.tru.ca
Driving Distance from Community	66 km
Enrolment (2011/2012)	24,090

Institution	Thompson Rivers University - Open Learning
Campus/Address	Box 3010 900 McGill Road Kamloops, BC V2C 5N3 Tel: 250-828-5000
Website	www.tru.ca/distance
Driving Distance from Community	66 km
Enrolment (2011/2012)	2,962

Data Source: Thompson Rivers University - www.tru.ca

TRAINING SERVICES

Institution	Category	Location	Website
Aboriginal Training & Employment Centre	Employment Training	Kamloops, BC	www.ateckamloops.ca
Academy of Learning College	Business, Health Care, Information Technology, Web Design	Kamloops, BC	www.academyoflearning.ca
Clearwater Training & Education Centre (TRU)	Occupational First Aid Level 1-3; Transportation Endorsement; Red Cross Emergency and Standard First Aid; Traffic Control; Foodsafe Level 1; Petroleum Safety Training; Construction Safety Training; Transportation of Dangerous Goods; WHMIS; and Ground Disturbance.	Clearwater, BC	www.tru.ca/regional_centres/clearwater.html
Headhunters School of Hair &	Esthetics	Kamloops, BC	www.headhuntershair.com

Esthetics

Interior Academy of Hair Design & Esthetics	Esthetics	Kamloops, BC	www.interioracademy.com
LTD Consulting	Youth Employment Training	Kamloops, BC	www.ltdconsulting.ca
Sprott-Shaw Community College	Educational Services	Kamloops, BC	www.sprottshaw.com
Thompson Career College	Health Care Services	Kamloops, BC	www.thompsoncc.ca

Data Source: District of Barriere – www.barriere.ca



5. TRANSPORTATION

MAJOR TRANSPORTATION ROUTES

PACIFIC GATEWAY

British Columbia's ports in Vancouver, Kitimat, Stewart and Prince Rupert are Asia's closest ports of entry on the west coast of North America, up to 58 hours closer than the ports of Los Angeles and Long Beach.

Canadian ports and airports are seamlessly integrated with road and rail connections to all major U.S. economic centers. British Columbia is the only gateway on the west coast of the Americas served by three transcontinental railways. Today, Canada's Pacific Gateway is an integrated, secure, reliable transportation network that includes world-class airports, seaports, railways, roadways and border crossings, bringing Canada and the North American market to Asia and the world. Canada's Pacific Gateway, through British Columbia's ports in Vancouver, Kitimat, Stewart and Prince Rupert, offers Asian shippers the most direct route between Asia and North America.

Canada's Pacific Gateway is a strong commitment by government and industry partners to make British Columbia's ports the preferred gateway for Asia-Pacific trade, with the most competitive port system and supply chain on the west coast of the Americas. This commitment builds on Canada's longstanding and strong cultural and economic ties with Asia. In the emerging new global economy, Canada's Pacific Gateway is a gateway to the future.



NORTHERN CORRIDOR

The Northern Corridor spans over half of continental Canada and reaches well into the heartland of North America south of Chicago, USA. It travels through the lowest elevations of the Americas great continental divide, also known as the “Yellow Head Pass,” and forms the straightest, shortest, flattest route for Asian- North American trade. Three Northern British Columbia ports; Kitimat, Stewart and Prince Rupert as well as the Port of Vancouver provide efficient access to this corridor. Each port offers unique advantages and services that meet the needs of the region and international trade.

Trans-continental rail, Trans Canada Highway and direct air service into international Air Hubs are in place. The corridor services business covered by the North American Free Trade Agreement, through a variety of break bulk and container services in ports operated by governments and those run by private port interests.

The Northern Corridor is less impeded by road closures, significant weather patterns and avalanches than the Southern Canadian corridor. It provides “one less day” shipping advantage to or from Asia compared to all other North American Port locations including Vancouver and all USA pacific Ports.

Existing trade in Kitimat and Prince Rupert include aluminum and paper shipped via privately owned break-bulk terminals, transshipment of petrochemicals through privately owned facilities, barge service and container port services. Growth is expected in energy exports including liquid natural gas, petroleum, and container capacity.

Canadian National Rail (CN Rail) reaches well into the heartland of America with shipping agreements in place with major US rail carriers. CN has made significant investments in the Northern Corridor rail line including extended sidings, upgrades to signal systems, increased bridge and tunnel clearances. The corridor is serviced by five international airports and four northern airports with Prince George offering international services. The largest passenger service airport west of Prince George and north of British Columbia’s Okanagan region is the Terrace-Kitimat Northwest Regional airport.



SOUTHERN CORRIDOR

Positioned on the southwest coast of British Columbia, Vancouver is North America's gateway to the world's most dynamic economies. Combining this magnificent port with the three intercontinental railways and efficient road and air connections, the Southern Corridor is a focal point for domestic and international trade and tourism.

Current investments in the South Corridor will support container capacity of six million twenty-foot equivalent units by 2020. It will provide efficient road connections from the port to the U.S. border and Canada's transcontinental highway system, and reliable access to eastern Canada and U.S. markets via three transcontinental railways.

The Southern Corridor is link to both Canada's transcontinental highway and road connections to the U.S. border, providing modern and efficient road connections to the entire continent.

\$7.2 billion has been committed to enhance efficiency, reduce congestion and improve the reliability of goods movement in the South Corridor.

To date, \$1.9 billion has been completed. These investments have improved traffic flows between the port and the U.S. border and enhanced connections to and trade flows along Canada's transcontinental highway system. By 2015, the Southern Corridor will have another \$5.3 billion of additional new road infrastructure, bridges and improvements to efficiently support additional traffic volumes from Port Metro Vancouver's expansions.

HIGHWAY 5 – COQUIHALLA HIGHWAY

Highway 5 is a north-south route in southern British Columbia, Canada. It connects the southern Trans-Canada route (Highway 1) with the northern Yellowhead route (Highway 16), providing the shortest land connection between Vancouver and Edmonton. It is 524 km (326 mi) in length. The portion of Highway 5 south of Kamloops is known as the Coquihalla Highway, while its northern portion is known as the Southern Yellowhead Highway.

The Coquihalla Highway has created greater access to the interior, cutting travel time to Vancouver by almost two hours while facilitating commuter traffic to and from Kamloops. The result has been increased building activity in the area that has continued for more than a decade.

HIGHWAY 1 – TRANS CANADA HIGHWAY

The Trans-Canada Highway between Victoria British Columbia and St. John's, Newfoundland, joins all ten provinces of Canada and is the world's longest national highway with a length of 7,821 km (4,860 mi.) The British Columbia portion of the highway runs along the path of the Canadian Pacific Railway, through the Thompson Nicola Regional District to the Port of Vancouver.

HIGHWAY 97 – CARIBOO HIGHWAY

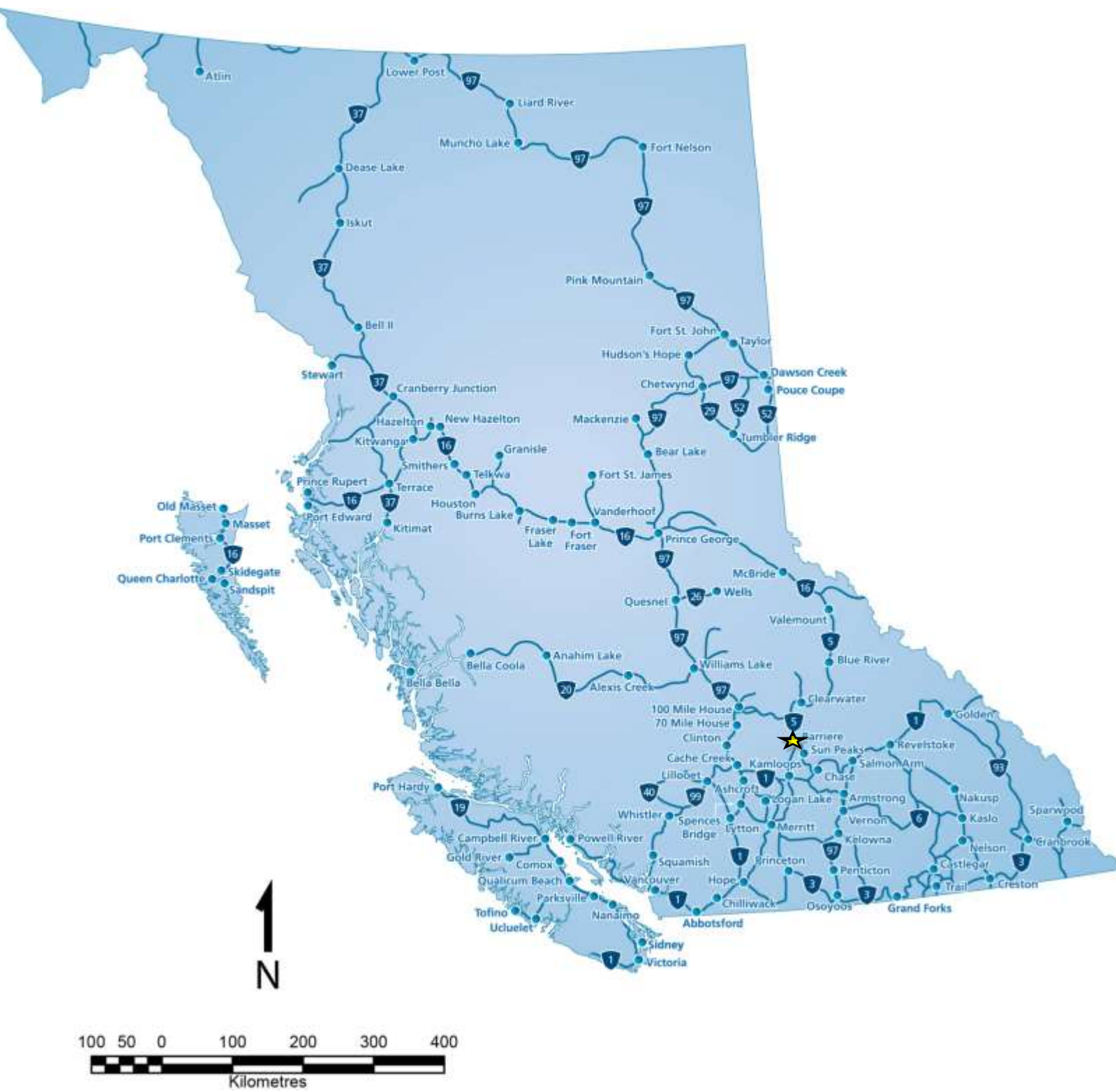
Highway 97 is the longest continuously-numbered route in British Columbia , and the longest provincial highway in Canada, running 2,081 km (1,293 mi) from the Canada/U.S.border at Osoyoos in the south to the British Columbia/Yukon border in the north at Watson Lake, Yukon.

The Cariboo Highway section of Highway 97, between Cache Creek and Prince George, is 441 km (274 mi) in length and is named for the Cariboo region, through which it travels. The Cariboo Highway designation begins at

Cache Creek, veering north for 11 km (7 mi) to its junction with Highway 99. North of Highway 99, Highway 97 travels 92 km (57 mi) through Clinton and 70 Mile House, where the British Columbia Railway begins to roughly parallel Highway 97.



HIGHWAYS



NORTHERN & SOUTHERN CORRIDOR SPECIFICATIONS

Commercial Vehicle Without Permit	Specifications	Commercial Vehicle With Permit	Specifications
Maximum Width	2.59 meters	Maximum Width	4.4 meters
Maximum Height	4.15 meters	Maximum Height	4.72 meters
Maximum Vehicle Weights		Maximum Vehicle Weights	
Super B	63,500 kgs	Super B	64,000 kgs
Single Axel	9,100 kgs	Single Axel	9,100 kgs
Tandem Axle (Set)	17,000 kgs	Tandem Axle (Set)	23,000 kgs
Tridem Axle (Set)	24,000 kgs	Tridem Axle (Set)	29,000 kgs

OVERHEAD CLEARANCE

Route 5 – Yellowhead South Highway	Clearance (meters)
▪ Sign Bridge	5.1816 m
▪ Barriere River Bridge	5.1816 m
▪ Gosnell Bridge	7.239 m
▪ Tete Jaune Underpass (CNR)	5.1054 m

PROVINCIAL PERMIT CENTRE

For more information on receiving a commercial vehicle permit please contact **1-800-559-9688**. The core hours of service are from 5am to 10pm, seven days a week and most statutory holidays. The 1-800 number is available to callers anywhere in Canada or the United States. Permits available through this line include:

- non-resident commercial vehicle permits
- term oversize and overweight permits
- single trip oversize and overweight permits
- motor fuel tax permits
- highway crossing permits
- extra-provincial temporary operating permits

HIGHWAY DISTANCES

Metro Area	Distance (kms)
Kamloops	66 km
Prince George	470 km
Kelowna	232 km
Edmonton	743 km
Vancouver	416 km
Calgary	624 km
Prince Rupert	1,180 km
Seattle	532 km
Portland	812 km



RAILROADS

CN Rail	
Main or Branch Line:	Branch and Main
Shortline or National:	National and Shortline
Distance to Nearest Switching Yard:	Located within Community
Capabilities	Cargo-Bulk, Container, Liquid, Multi Commodities
Website	www.cn.ca

Data Source: Canadian National Railway – www.cn.ca

COMMERCIAL AIRPORTS

Kamloops Airport (YKA)

Hub Status	Commercial
Distance From Community	66 km
Hours of Operation	24 hrs / 7 days
Approved Capital Expansion	Runway expansion and facility upgrades completed in 2009
Customs Point of Entry	Yes
Foreign Trade Zone	No
Full Instrumentation	No
No. of Runways	2
Runway Length	1,800 m; 622 m
Helicopter Pad	Yes
Carriers	Jazz Air, Central Mountain Air, Horizon Air, FedEx, Purolator, Canadian Helicopters, Highland Helicopters, Westair Aviation Inc., WestJet
Weekly Non-Stop Flights	56

Yellowhead Helicopters Ltd.

Hub Status	Commercial
Main Office	3073 Airport Road, Kamloops, BC V2B 7W9
Helicopter Pad	Yes
About	Yellowhead Helicopters is a privately held Canadian company that provides commercial helicopter solutions to the public, industry and government. From bases strategically located throughout BC and Alberta, Yellowhead Helicopters continues to support the forestry, mining, petroleum, utility and tourism industries.
Website	www.yhl.ca

Data Source: Kamloops Airport (YKA), 2013- www.kamloopsairport.com
Data Source: Yellowhead Helicopters Ltd. - www.yhl.ca



PORTS

PORT METRO VANCOUVER

Port Metro Vancouver

Driving Distance from Community 355 km

Location of Port Vancouver, BC

Terminals: Port Metro Vancouver offers 28 deepsea and domestic marine terminals that service five business sectors: automobiles, breakbulk, bulk, containers and cruise. To view terminal locations, please click on the Terminals & Facilities tab of our interactive map on the home page of this website.

For more information on individual terminals, please visit:

<http://www.portmetrovancover.com/users/landoperations/terminalsandfacilities.aspx>

Type of Port: Ocean

Channel Depth: Minimum - 10 meters (33 feet)

Turning Basin: Unlimited

Shallow Water Barging Facilities: Yes

Deep Water Barging Facilities: Yes

General Cargo Facilities: Yes

Containerized Facilities: Yes

Storage Facilities: Yes

Highways Serving Port: #1, #1A, #7A, #99, #19

Railways Serving Port: CN Rail, CP Rail, BC Rail, Burlington Northern Santa Fe Railroad

Types of Services Bulk, Break-Bulk, Automobile, Container, Cruise

Port Address 999 Canada Place, Vancouver, BC V6C 3T4

Website www.portmetrovancover.com



ASHCROFT TERMINAL

Ashcroft Terminal	www.ashcroftterminal.com
Distance from Community	159 km
Services	Industrial Transloading, Materials Handling, Industrial Storage
Type of Port	Inland Terminal Logistics and Transport
General Cargo Facilities	Yes
Containerized Facilities	Yes (future)
Storage Facilities	Yes
Highways Serving Port	#1, #97
Railways Serving Port	CP Rail Mainline, CP Switching Lead and Loading Tracks CN Rail Mainline
Types of Services	Bulk, Break-Bulk, Container (future)
Port Address	1000 Evans Road, Ashcroft, BC, V0K 1A0



PORT OF PRINCE RUPERT

Port of Prince Rupert

Driving Distance from Community	1,239 km
Location of Port	Prince Rupert, BC
Terminals	Fairview (Container) Terminal, Ridley Terminals, (coal, wood pellets), Prince Rupert Grain, Northland Cruise Terminal
Type of Port	Ocean
Channel Depth	35-55 meters
Shallow Water Barging Facilities	Yes
Deep Water Barging Facilities	Yes
General Cargo Facilities	Yes
Containerized Facilities	Yes
Refrigerated Container Facilities	Yes
Cruise Ship Facilities	Yes
Storage Facilities	Yes
Highway Serving Port	#16
Railway Serving Port	CN Rail
Types of Services:	Bulk/break-bulk: Coal, Petroleum Coke, Wood Pellets, Grain, Logs,
Imports	Retail (including electronics, apparel, furniture, auto parts); petroleum products; industrial inputs (tiles, glass)
Exports	Midwest – specialty crops; scrap metal, recycled paper British Columbia – Forest products (lumber, pulp, logs); aluminum, seafood
Shipping Lines	Cosco, Hanjin, Yang Ming, K-Line, Quickload Transloading Services, Shipping Agents, GW Nickerson Co., Northcoast Shipping, Rupert Marine Shipping, Tidals Transport & Trading Ltd.
Website	www.rupertport.com



CUSTOM POINT OF ENTRY

Canadian Border Services Agency**Abbotsford-Huntingdon****Type of Entry Point**

Highway Entry

Location2 Sumas Way
Huntingdon, BC V2S 8B7
Tel: 1-800-461-9999

Canadian Border Services Agency**Douglas****Type of Entry Point**

Highway Entry

Location220 Highway 99
Surrey, BC V3S 9N7
Tel: 1-800-461-9999

Canadian Border Services Agency**Kamloops Airport****Type of Entry Point**

Airport

Location3025 Airport Road; Room 108
Kamloops, BC V2B 7W9
Tel: 1-800-461-9999

Canadian Border Services Agency**Osoyoos Starlite Marina****Type of Entry Point**

Port

Location202 97th Street
Osoyoos, BC V0H 1V1
Tel: 1-800-461-9999

Canadian Border Services Agency**Prince Rupert****Type of Entry Point**

Port

Location368-309 2nd Avenue West
Prince Rupert, BC V8J 3T1
Tel: 1-800-461-9999

Data Source: Canada Border Services Agency – “Directory of CBSA Offices” – 2013 – www.cbsa-asfc.gc.ca

PORT SHIPPING DISTANCES

The NW Transportation and Trade Corridor ports (Kitimat and Prince Rupert, Stewart) are between 1 and 1 1/2 day closer to general Asia Pacific markets than the Ports in British Columbia's lower mainland; and the Vancouver Ports. The Southern Ports are closer to the Panama Canal and subsequently, the Atlantic. The following table is in nautical miles. The Time/Speed/Distance Calculations are at 16.1439 Kn/Hr., the average speed The Port of Vancouver uses for calculating their shipping to Yokohama, Hong Kong, Kaohsiung (Taiwan) and Xingang (China). Deep-sea vessels travel at various speeds between 14Kn/Hr and 20Kn/Hr. The 'great circle shipping route' to Asia from North America has well documented ocean currents and weather/wind patterns which allows for accurate estimates.

	Kitimat	Prince Rupert	Stewart	Vancouver	Los Angeles	Yokohama (Japan)	Hong Kong	Kaohsiung Kang(Taiwan)	Xingang (China)
Kitimat	--	121 NM 7.5 Hrs	264 NM 17 Hrs	400 NM 1 Day	1,391 NM 3.5 Days	3,941 NM 10 Days	5,444 NM 14 Days	6,,187 NM 16 Days	6,187 NM 16 Days
Prince Rupert	121 NM 7.5 Hrs	--	123 NM 10 Hrs	477 NM 1.2 Days	1,432NM 3.6 Days	3,810 NM 9.8 Days	5,323 NM 13.7 Days	6,110 NM 15.7 Days	6,110NM 15.7 Days
Stewart	264 NM 17 Hrs	123 NM 10 Hrs	--	573 NM 1.5 Days	1,529 NM 4 Days	3,896 NM 10.3 Days	5,406 NM 14.1 Days	5,155 NM 13.4 Days	4,749 NM 12.5 Days
Vancouver	400 NM 10 Day	477 NM 1.2 Days	573 NM 1.5 Days	--	991 NM 2.5 Days	4,262 NM 11 Days	5,763 NM 15 Days	6,587 NM 17 Days	7,578 NM 20 Days
Los Angeles	1,391 NM 3.5 Days	1,432 NM 3.6 Days	1,529 NM 4 Days	991 NM 2.5 Days	--	4,839 NM 12.5 Days	6,380 NM 18 Days	7,578 NM 20 Days	8,959 NM 23 Days
Yokohama	3,941 NM 10 Days	3,810 NM 9.8 Days	3,896 NM 10.3 Days	4,262 NM 11 Days	4,839 NM 12.5 Days	--	1,585 NM 4 Days	1,335 NM 3.4 Days	1,335 NM 3.4 Days
Hong Kong	5,444 NM 14 Days	5,323 NM 13.7 Days	5,406 NM 14.1 Days	5,763 NM 15 Days	6,380 NM 18 Days	1,585 NM 4 Days	--	290 NM 18 Hrs	290 NM 18 Hrs
Kaohsiung Kang	6,187 NM 16 Days	6,587 NM 17 Days	5,155 NM 13.4 Days	6,587 NM 17 Days	7,578 NM 20 Days	1,335 NM 3.4 Days	290 NM 18 Hrs	--	227 NM 14 Hrs
Xingang	6,187 NM 16 Days	6,587 NM 17 Days	4,749 NM 12.5 Days	7,578 NM 20 Days	8,959 NM 23 Days	1,335 NM 3.4 Days	290 NM 18 Hrs	227 NM 14 Hrs	--

Source: United States Government. "Distances Between Ports" Prepared and published by the National Imagery and Mapping Agency, Bethesda, Maryland. Ninth Edition 1997. *Time/Speed/Distance Calculations at 16.1439 Kn/Hr., the average speed Vancouver Port lists to reach Yokohama, Hong Kong, Kaohsiung (Taiwan) and Xingang (China)

6. INDUSTRIAL & COMMERCIAL LAND USE

LAND ZONED AND DESIGNATED IN OFFICIAL COMMUNITY PLAN

	Industrial Land	Commercial Land
Acres Developed	140 ac	200 ac

Industrial Parks	Number
Number of Industrial Parks	2
Total Acres	78.66 hectares
Number of Acres in Use	41.61 hectares
Number of Acres Vacant	37.05 hectares

Data Source: District of Barriere – www.barriere.ca



LOCAL PERMIT APPROVALS

Type of Permit	Associate Fees
Building Permit	Construction Value: a) \$1 - \$1,000 = \$50 b) \$50 plus for each \$1,000 of additional construction value up to a maximum of \$100,000 = \$6 c) \$644 plus for each \$1,000 of additional construction value exceeding \$100,000 = \$5
Business License	\$50 - \$250 (varies depending on nature of business)
Development Permit	Wherein issuance is delegated: \$250 Where considered by the Board: \$500
Occupancy Permit	\$50
Plan Amendment	\$1,500
Re-Zoning Application	\$1,500
Subdivision Application	Base fee: \$500 Additional fee for each lot created: \$50 Strata Conversion base fee: \$1,000 Additional fee for each strata lot: \$50

Data Source: District of Barriere – www.barriere.ca

ACQUISITION OF CROWN LAND

- Crown land is land that is owned by the Province of British Columbia. The Province is the steward of the land and can lease, license and sell Crown land for a variety of purposes including residential, commercial, industrial, agricultural, tourism and recreational purposes.

Company	Contact	Notes
Integrated Land Management Bureau	FrontCounterBC@gov.bc.ca	Develops Crown land parcels with values up to \$2.5 million
Ministry of Jobs, Tourism and Skills Training	Telephone: 250-371-3952	Handles land sales related to resort development, under the All Seasons Resort Policy.
Ministry of Transportation	Telephone: 250-387-3198	Handles land sales related to public airports and port authorities and the marketing of Crown land is done through MLS Realtors

- To view properties that the Federal Government of Canada has for sale, please visit: <http://reo.pwgsc.gc.ca/public/>

7. UTILITIES

WATER SYSTEM – DISTRICT OF BARRIERE

The District of Barriere operates a water system serving the community, which currently draws its water supply from two deep and one shallow groundwater wells. Water characteristics and quality vary from well to well and the water is treated to Ministry standards before entering the District's distribution system. There are still a small number of homes serviced by water licences or private water wells on individual properties.

Data Source: District of Barriere – www.barriere.ca

WATER PRODUCTION

District of Barriere

Rated Capacity	1,600 G/minute
Average Daily Demand	Summer: 8 million G/week Winter: 168,000 G/week
Peak Demand	12 million G
Residential Cost (flat rate)	\$30.25/Month
Water Connection Fee (Industrial)	\$300.00

Data Source: District of Barriere – www.barriere.ca



WASTE WATER SYSTEM – DISTRICT OF BARRIERE

Residents and businesses in the District of Barriere are set to benefit from a new community wastewater system that has been made possible through \$6.7 million from Canada's Gas Tax Fund.

The new wastewater system will connect the oldest neighbourhoods in the downtown core, replacing septic fields. In turn this will encourage redevelopment, revitalization and densification of the town core, supporting a key goal in the District of Barriere's new Official Community Plan. It is anticipated that the funding will cover the entire cost of the project.

As well as addressing the need to replace older and, in some cases, near-failing systems, the sewage plant will incorporate a solar-panelled greenhouse where living plants will assist in the water purification process. It will be able to receive septage from the local area, providing a small revenue stream towards its operation. The treated water will be used to irrigate the adjacent parks and baseball diamonds, helping to conserve Barriere's supply of potable water.

Data Source: District of Barriere – www.barriere.ca

LANDFILL AND WASTE MANAGEMENT

Louis Creek Eco-Depot

Location	4077 Agate Bay Road, Thompson-Nicola O, BC
About Eco-Depots	Eco-Depots are an improved way for residents to manage their solid waste. A one-stop drop for all waste and recyclable materials. Eco-Depots also employ a weight-based strategy, which will be based on \$60.00/tonne disposal fee for garbage. This replaces a volume-based system that was used at landfills.

Data Source: Thompson-Nicola Regional District – www.tnrd.ca

LICENSED HAZARDOUS MATERIALS DISPOSAL

Name of Site	
No. of Licensed Hazardous Waste Haulers Serving the Area	1

Data Source: Ministry of Environment – www.env.gov.bc.ca

ELECTRIC POWER

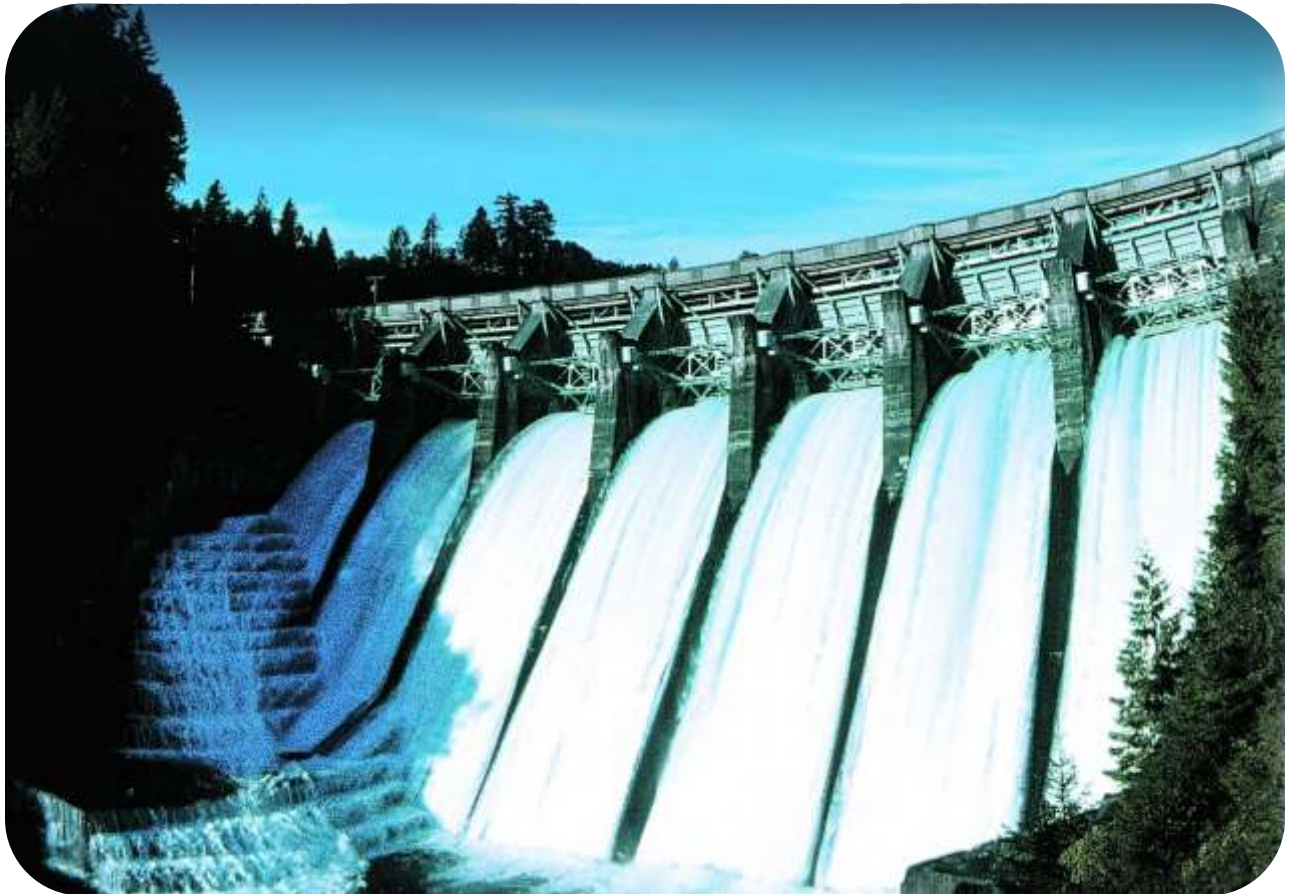
Provider: BC Hydro	www.bchydro.com
Net Importer/Exporter of Power:	Net Exporter – BC Hydro generates 50,000 GWH of electricity annually.
% of Reserve Margin Including Generation & Net Purchases	8% as per WSCC guidelines plus an additional 8% surplus
Average Electrical Service Availability Index	
▪ Most Recent Year	99.974
▪ Last 5 Years	99.967
Name of Power Pool Membership	Formal membership in WSCC, WSPP, Power Pool of Alberta (PPA), MAPP. Also active in SPP and CalPX
Source Electric Power Deregulated	Wholesale competition allowed
Residential Customers	5.98 cents per Kwh for the first 1,350 Kwh they use over a two month billing period. Above that amount customers will pay 7.21 cents per Kwh for the balance of the electricity used during the billing period.
Business Customers	Average Cost Per kWh
General Service under 35kW for 2 Months	<i>Small business such as stores, small warehouses, offices and auto repair shops</i>
▪ Basic Charge	\$15.48 per day
▪ All kWh	\$0.0736 kWh
▪ Minimum Charge	The Basic Charge
▪ Rate Rider	0.5% Rate Rider applied to all charges, before taxes and levies.
General Service 35 kW and over for 1 month	<i>Retail stores, medium industry, manufacturing, schools, office buildings, supermarkets</i>
▪ Basic Charge	\$15.48 per day
▪ Demand Charge	First 35 kW for NIL Next 115 kW at \$3.77 per kW All additional kW at \$7.23 per kW
▪ Energy Charge	First 14,800 kWh \$0.0736 per kWh All additional kWh \$0.0354 per kWh
▪ Discounts	1.5% on entire bill if customer’s electricity is metred at primary potential \$0.25 per kW if customer supplies transformation from a primary to a secondary potential. If a customer is entitled to both discounts the 1.5% discount is applied first.
▪ Minimum Charge	50% of the highest maximum demand charge billed in any month within an on-peak period (1 November to 31 March inclusive) during the preceding 11 months.
▪ Rate Rider	0.5% Rate Rider applied to all charges, before taxes and levies.

Industrial: Transmission Service

Mines, chemical plants, large sawmills, pulp and paper mills, large manufacturing

▪ Demand Charge	\$5.036 per kVa of billing demand
▪ Energy Charge	\$0.02462 per kWh applied to all kWh up to and including 90% of the costumers baseline load (CBL) in each billing year. \$0.07360 per kWh applied to all kWh above 90% of the CBL in each billing year.
▪ Minimum Charge	\$5.036 per KVa of billing demand per billing period
▪ Rate Rider	0.5% Rate Rider applied to all charges, before taxes and levies.

Data Source: BC Hydro "Rates" – www.bchydro.com



TELECOMMUNICATIONS

Name of Provider	TELUS Communications Company
Corporate Address	#5-3777 Kingsway Burnaby, BC V5H 3Z7
Website	www.telus.com
Contact Number	
▪ Residential	250-310-2255
▪ Business	250-310-3100
Service Characteristics of The Office:	
▪ Switch Technology	Digital
▪ Fiber Service provided	Yes
▪ 100 Mbps LAN Service Available	Yes
▪ Monitoring- Remotely or On-Site	Remotely
▪ ISDN Available	Yes
▪ ADSL Available	Yes (dependent on location)
▪ ADSL Available From Switch	Yes (dependent on location)
▪ Central Office on Self-Healing Fiber Ring	Yes
▪ Dual Feed from Two Separate Switching Offices	Yes
▪ Multiple Route Diversity	Yes

Data Source: Telus Communications Company - www.telus.com

8. BUSINESS SUPPORT SERVICES

Business Support Services

Machine Shop (Tool & Die)	12
Welding	24
Office Equipment Service & Repair	5
Temporary Employment Services	3

International Support Services

Import/Export Brokers	3
International Courier Services	11
Freight Forwarders	16

Data Source: Trade and Invest BC - www.tools.britishcolumbia.ca/Invest

Note: These support services are available in the City of Kamloops (60 km away).



9. GOVERNMENT

MUNICIPAL GOVERNMENT

District of Barriere

Form (Structure)	Mayor and Council
Number of Elected Officials	7
Mayor	Virginia Smith
Chief Administrative Officer	Colleen Hannigan

Data Source: Civic Info BC - www.civicinfo.bc.ca/

FIRST NATIONS GOVERNMENT

Simpcw First Nation

Form (Structure)	Chief & Council
Number of Elected Officials	7
Chief	Rita Matthew
Contact	Box 220 Barriere, B.C. V0E 1E0 Telephone: 1-250-672-9995 Email: reception@simpcw.com

REGIONAL DISTRICT

Thompson-Nicola Regional District

Form (Structure)	Chair and Directors
Number of Elected Officials	26
Chair	John Ranta
Chief Administrative Officer	Sukhbinder Gill

Data Source: Civic Info BC - www.civicinfo.bc.ca/

PROVINCIAL

Government of British Columbia

Form (Structure)	British Parliamentary
Number of Elected Officials	85
How Often Does Legislature Convene	2013 - February 12-March 15; April 8-May 16; May 27-30; October 7-November 7

Data Source: Legislative Assembly of British Columbia - "2013 Parliamentary Calendar" - www.leg.bc.ca/calendar.htm

PREMIER

Name	Christy Clark
Affiliation	British Columbia Liberal Party
Year Elected	May 14, 2013
Current Term Expiration	4 years
Allowed to Run for Another Term	Yes
Next Election Date	May 2017

PROVINCIAL GOVERNMENT REPRESENTATION

Name of Member of Legislative Assembly (MLA)	Terry Lake
Total Members of Legislative Assembly	1
Electoral District	Kamloops – North Thompson
Party Affiliation	BC Liberal Party

FEDERAL GOVERNMENT REPRESENTATION

Name of Member of Parliament (MP)	Cathy McLeod
Electoral District	Kamloops-Thompson-Cariboo
Year Elected	October 14, 2008
Party Affiliation	Conservative Party of Canada

SENATORS

No. of Appointed Officials	In Canada there are ordinarily 105 Senators appointed by the Governor General on the advice of the Prime Minister.
-----------------------------------	--



10. HOUSING

HOUSING CHARACTERISTICS

Dwelling Type	Number
Single-detached houses	1,080
Semi-detached houses	15
Apartments, duplex	60
Other dwellings	265
Total Number of Private Dwellings	1,410

Data Source: Statistics Canada – 2011 Census – “Household and Dwelling Characteristics” - www12.statcan.gc.ca/census-recensement/index-eng.cfm

AVERAGE HOUSING VALUES

Municipality	Single Family Homes	Total Property Tax & Charges
District of Barriere	\$174,747	\$1,539

Data Source: Ministry of Community, Sport, and Cultural Development, 2014 - www.cscd.qov.bc.ca/lqd/infra/



11. TAXATION

CORPORATE INCOME TAX

	Small Business	Manufacturing	Non-Manufacturing
Federal			
▪ Rate	11%	15%	15%
▪ Formula (Sales, Property & Payroll)	n/a	n/a	n/a
▪ Accelerated Depreciated Permitted	Yes	Yes	Yes
Provincial			
▪ Rate	2.5%	10.0%	10.0%
▪ Formula (Sales, Property & Payroll)	Sales & Payroll	Sales & Payroll	Sales & Payroll
▪ Accelerated Depreciated Permitted	No	No	No
Local			
<i>British Columbia has no local taxes</i>			
Total Federal and Provincial Corporate Income Tax	13.5%	25%	25%

PERSONAL INCOME TAX

	Federal	Provincial	Local
Earned Income	15 – 29%	5.06 – 14.7%	0%
Unearned Income (e.g. Dividends)	0 – 14.55%	0 – 3.92%	0%
Capital Gains	7.5 – 14.5 %	2.08 – 7.35%	0%

SALES / USE TAX

	Rate	Notes
Goods and Services Sales Tax	5%	GST on business inputs is fully recoverable
Provincial Sales Tax	7%	PST Retail Sales Tax
Local	0%	BC has no local sales tax
Total (Effective Combined Rate) Business	7%	Net of GST 0% for production machinery and equipment for eligible manufacturers

SALES TAX RATE BY UTILITY

	Yes/No	Rate	Notes
Electric Power	Yes	12%	5% GST is fully recoverable
Natural Gas	Yes	12%	5% GST is fully recoverable
Fuel Oil	Yes	12%	5% GST is fully recoverable
Water	No	0%	-
Sewer	No	0%	-
Hazardous Waste Disposal	Yes	12%	5% GST is fully recoverable

TELEPHONE SUBJECT TO SALES/USE TAX

	Yes/No	Rate	Notes
Local	Yes	12%	5% GST is fully recoverable
Long Distance	Yes	12%	5% GST is fully recoverable

MACHINERY AND EQUIPMENT SUBJECT TO SALES/USE TAX

	Yes/No	Rate	Notes
Production	No	0%	-
Non-Production	Yes	12%	5% GST is fully recoverable
Pollution Control	Yes	12%	5% GST is fully recoverable
Office Equipment & Fixtures	Yes	12%	5% GST is fully recoverable

SALES/USE TAX ON TANGIBLE PROPERTY

	Yes/No	Rate	Notes
Office Building Construction Materials	Yes	12%	5% GST is fully recoverable
Industrial Building Construction Materials	Yes	12%	5% GST is fully recoverable
Manufactures Raw Materials	No	0%	-
Standard Software	Yes	12%	5% GST is fully recoverable
Custom Software	Yes	12%	5% GST is fully recoverable

SALES/USE TAX ON INTANGIBLE PROPERTY

	Yes/No	Rate	Notes
Accounts Receivable	No	0%	-
Capital Stock	No	0%	-
Stock/Bond Transaction Fee	No	0%	-

PROPERTY TAX – DISTRICT OF BARRIERE

Levy	Residential	Utility	Major Industry	Light Industry	Business	Non-Profit	Farm
General Municipal	3.23093	20.19329	11.79288	11.79288	8.07732	3.23093	3.23093
Regional Hospital	0.39269	1.37440	1.33514	1.33514	0.96208	0.39269	0.39269
Regional District	1.53249	5.36372	5.21047	5.21047	3.75461	1.53249	1.53249
BCAA	0.0610	0.5213	0.1811	0.1811	0.0610	0.0610	0.0610
MFA	0.0002	0.0007	0.0007	0.0005	0.0002	0.0002	0.0002
Total	5.21731	27.45341	18.52029	18.52009	12.85521	5.21731	5.21731

PROPERTY TAX – ELECTORAL AREA O

Levy	Residential	Utility	Major Industry	Light Industry	Business	Non-Profit	Farm
General Area O	2.0742	7.2597	7.0523	7.0523	5.0818	2.0742	2.0742
Regional Hospital	0.3919	1.3716	1.3324	1.3324	0.9601	0.3919	0.3919
School	2.4239	14.0000	6.2000	10.8000	6.2000	3.4000	6.9000
BCAA	0.0610	0.5213	0.1811	0.1811	0.0610	0.0610	0.0610
MFA	0.0002	0.0007	0.0007	0.0005	0.0002	0.0002	0.0002
Total	4.9512	23.1533	14.7665	19.3663	12.3031	5.9273	9.4273

Data Source: District of Barriere – www.barriere.ca
 Data Source: Government of B.C. - "Rural Property Tax" - www.sbr.gov.bc.ca/applications/rpt/
 Property Tax rates effective 2013, Property Tax rates per \$1000 Assessed Personal Property (M&E, Inventory, Other)
 Municipal Note: BC does not have Personal Property Taxes.

12. INTERNATIONAL RESOURCES

INVESTMENT AND BUSINESS SUPPORT OFFICES

Barriere & District Chamber of Commerce

Contact Name	Scott Kershaw, President
Address	3 - 4353 Conner Road PO Box 1190, Barriere, BC V0E 1E0
Phone Number	250-672-9221
E-Mail	bcoc@telus.net

Southern Interior Development Initiative Trust

Contact Name	Helen Patterson, Financial and Economic Development Officer
Address	204-3131 29th Street, Vernon, BC V1T 5A8
Phone Number	250-545-6829
E-Mail	support@sidit-bc.ca

Southern Interior Beetle Action Coalition

Contact Name	Dalyce Brandt, Administrator
Address	PO Box 3006, Kamloops, BC V2C 6B7
Phone Number	250-378-1929
E-Mail	admin@sibacs.com

Community Futures Thompson Country

Address	230 - 301 Victoria Street, Kamloops, BC V2C 2A3
Phone Number	250-828-8772 1-877-335-2950
Webpage	www.communityfutures.net

Thompson Nicola BC Film Commission

Contact Name	Victoria Weller, Executive Director of Film
Address	300 – 465 Victoria Street, Kamloops, BC V2C 2A9
Phone Number	250-377-8673 ext. 7058
E-Mail	vweller@tnrd.ca

Ministry of Jobs Tourism and Skills Training – Regional Economic Operations

Contact Name	Myles Bruns, Regional Project Manager, Thompson-Okanagan
Address	250 – 455 Columbia Street, Kamloops, BC, V2C 6K4
Phone Number	250-371-3931
E-Mail	myles.bruns@gov.bc.ca

Ministry of Jobs Tourism and Skills Training - International Investment and Company Attraction

Contact Name	Michael Track, A/Executive Director – Investor Services
Address	999 Canada Place, Suite 730, Vancouver, BC, V6C 3E1
Phone Number	604-775-2202
E-Mail	michael.track@gov.bc.ca

FINANCIAL INSTITUTIONS

Name of Company	Address	Phone Number	Website
Interior Savings Credit Union	4621 Barriere Town Road Barriere, BC	250-672-9736	www.interiorsavings.com

Data Source: DRF Consulting Research, 2013

EMPLOYMENT ASSISTANCE

Name of Company	Address	Phone Number	Website
Barriere Employment Services	4629 Barriere Town Road, Box 75 Barriere, BC V0E 1E0	250-672-0036	www.clearwateremployment.ca

Data Source: DRF Consulting Research, 2013

AIR TRANSPORTATION SERVICE

Largest International Airport	Vancouver International Airport (YVR)
--------------------------------------	--

Distance to Airport	416 km
----------------------------	--------

No. Of Weekly Non-Stop Flights To	
--	--

- | | |
|------------------------|------------------|
| ▪ Asia | Average 99/Week |
| ▪ Europe | Average 42/Week |
| ▪ Mexico | Average 9/Week |
| ▪ United States | Average 722/Week |
-

Closest International Airport	Kelowna International Airport (YLW)
--------------------------------------	--

Distance to Airport	232 km
----------------------------	--------

No. Of Weekly Non-Stop Flights To	
--	--

- | | |
|----------------------------|----|
| ▪ Greater Vancouver | 84 |
| ▪ Calgary | 70 |
| ▪ Edmonton | 35 |
| ▪ Seattle | 28 |
| ▪ Greater Victoria | 7 |
-

Data Source: DRF Consulting Research, 2013



Photo Credit: Larry Goldstein - <http://www.yvr.ca/en/media/photo-and-video-gallery/Photos.aspx>

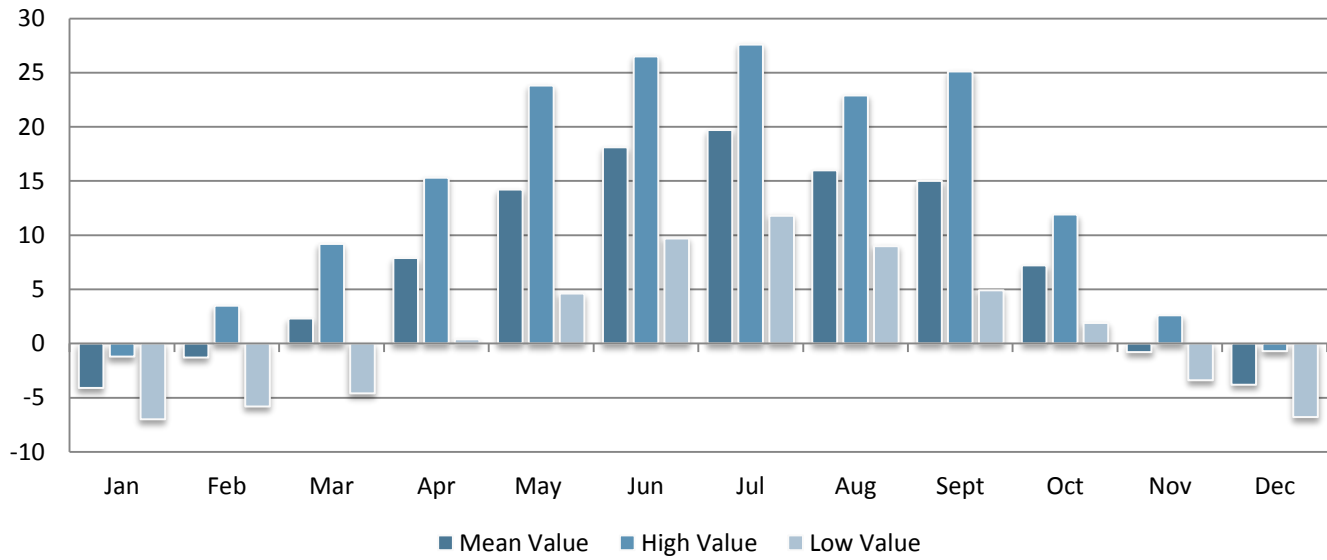
13. QUALITY OF LIFE

CLIMATE

Location: Barriere, BC, Canada
Latitude: 51.1862° N
Longitude: 120.1455° W



AVERAGE TEMPERATURE IN DEGREES CELSIUS BY MONTH



Data Source: Environment Canada - "National Climate Data And information Archive," 2010 – <http://www.climate-charts.com/Countries/Canada.html#BC>

CULTURE

TOP ANNUAL EVENTS

Top Events	Location	Date(s)
Barriere Farmer's Market	Barriere, BC	April - October
North Thompson Fall Fair Rodeo	Barriere, BC	September
Simpcw First Nation Pow Wow	Barriere, BC	June
Arts & Culture Festival	Barriere, BC	April
Clearwater Canoe Regatta	Clearwater, BC	September
Clearwater Hockey Days	Clearwater, BC	January
Clearwater Kayak Festival	Clearwater, BC	August
First Fish Ceremony	Clearwater, BC	August
Rotary May Day Parade	Clearwater, BC	May
Simpcw First Nation School Program	Clearwater, BC	September
Star Gazing Festival	Clearwater, BC	August
Winterfest	Clearwater, BC	January
Hot Night in the City - Antique Cars	Kamloops, BC	July
Kamloops Cowboy Festival	Kamloops, BC	March
Kamloops International Film Festival	Kamloops, BC	March
Kamlupa Pow Wow	Kamloops, BC	August long weekend
Music in the Park	Kamloops, BC	July-August
Theatre BC Mainstage	Kamloops, BC	July
FIS World Cup Speek Skiing (Sun Peaks)	Sun Peaks, BC	February

Data Source: District of Barriere - www.barriere.ca

CULTURAL PLACES AND AMENITIES

Amenity	Number
▪ Theatres	0
▪ Museums	1
▪ Community halls	2
▪ Art Galleries	1
▪ Libraries	1
▪ National Historic Sites	1

Data Source: District of Barriere - www.barriere.ca



CULTURE AND RECREATION

Amenity	Number
Number of Enclosed Shopping Malls	0
Religion	
▪ Catholic Churches	1
▪ Protestant Churches	3
▪ Synagogues	0
▪ Other Religious Institutions	1

Data Source: District of Barriere - www.barriere.ca



RECREATIONAL AMENITIES IN THE THOMPSON-NICOLA REGIONAL DISTRICT

Activity	Amenity
▪ Adventure Resorts & Guest Ranches	<ul style="list-style-type: none"> ▪ Alpine Meadows Resorts ▪ Big Bar Guest Ranch ▪ Caverhill Lodge ▪ Douglas Lake Ranch ▪ Dutch Lake Resort ▪ Echo Valley Guest Ranch ▪ Helmcken Falls Lodge ▪ Quilchena Resort ▪ Lac Le Jeune ▪ Roche Lake Resort ▪ Sundance Guest Ranches ▪ Tod Mountain Guest Ranch ▪ Wells Gray Guest Ranch
▪ Biking & Skating	<ul style="list-style-type: none"> ▪ Ashcroft Skate Park ▪ Kamloops Bike Ranch ▪ Kamloops Skate Park ▪ Merritt Skate Park ▪ Sun Peaks Bike Park
▪ Destination Spas	<ul style="list-style-type: none"> ▪ Sunmore Ginseng Spa
▪ Golf	<ul style="list-style-type: none"> ▪ Chinook Cove ▪ The Dunes ▪ Eaglepoint Golf Resort ▪ Kamloops Golf & Country Club ▪ Lacarya Golf Course ▪ Macarthur Island ▪ Meadow Creek Golf Club ▪ Merritt Golf & Country Club ▪ Mount Paul Golf Course ▪ Pineridge Golf Course ▪ Quilchena on the Lake Golf & RV Park ▪ Rivershore Estates & Golf Links ▪ Sagebrush Golf & Country Club ▪ Semlin Valley Golf Club ▪ Shuswap Lake Estates

	<ul style="list-style-type: none"> ▪ Sun Peaks Golf Course ▪ Sun Rivers Golf Resort ▪ Sunshore Golf Course ▪ Tobiano Golf Course ▪ Talking Rock Golf Course ▪ Wells Gray Golf Course & RV
<ul style="list-style-type: none"> ▪ Heritage & Cultural Experiences 	<ul style="list-style-type: none"> ▪ Historic Hat Creek Ranch ▪ Kamloops Heritage Railway ▪ Kamloops Wildlife Park ▪ Merritt Country Music Hall of Fame ▪ Secwepemc Museum and Heritage Park
<ul style="list-style-type: none"> ▪ Lakes 	<ul style="list-style-type: none"> ▪ Barnes Lake ▪ Barriere Lakes ▪ Big Bar Lake ▪ Kamloops Lake ▪ Loon Lake ▪ Nicola Lake ▪ Shuswap Lake
<ul style="list-style-type: none"> ▪ Provincial Parks 	<ul style="list-style-type: none"> ▪ Big Bar Provincial Park ▪ Chu Chua Cottonwood Provincial Park ▪ Downing Provincial Park ▪ Elephant Hill Provincial Park ▪ Green Lake Provincial Park ▪ Greenstone Mountain Provincial Park ▪ Harry Lake Aspen Provincial Park ▪ Juniper Beach Provincial Park ▪ Marble Canyon Provincial Park ▪ Momich Lakes Provincial Park ▪ Monck Provincial Park ▪ North Thompson Islands Provincial Park ▪ Painted Bluffs Provincial Park ▪ Steelhead Provincial Park ▪ Tunkwa Provincial Park ▪ Walhachin Oxbows Provincial Park ▪ Wells Gray Provincial Park
<ul style="list-style-type: none"> ▪ Rivers 	<ul style="list-style-type: none"> ▪ Clearwater River ▪ Coldwater River ▪ Mahood River ▪ Nicola River ▪ Raft River ▪ Thompson River
<ul style="list-style-type: none"> ▪ RV & Camping 	<ul style="list-style-type: none"> ▪ Acacia Grove RV Park & Cabins ▪ Ashcroft Legacy Park Provincial Campsites ▪ Blue River Campground & RV Park ▪ Brookside Campsite ▪ Claybanks RV Park ▪ Clinton Pines Campground ▪ Gold Trail Rv Park ▪ Pinegrove Campground & RV Park ▪ Riley Dam Campground
<ul style="list-style-type: none"> ▪ Sporting & Exhibition Centres 	<ul style="list-style-type: none"> ▪ Ashcroft Curling Rink ▪ Ashcroft Tennis Courts ▪ Barriere Curling Rink

- Brock Arena
- Clinton Arena
- Interior Savings Centre
- Kamloops Memorial Arena
- Logan Lake District Recreation Centre
- McArthur Island Sports & Event Centre
- McDonald Park Pool
- Merritt Convention & Civic Centre
- Merritt Curling Club Rink
- Nicola Valley Memorial Arena & Aquatic Centre
- Tournament Capital Centre
- Valleyview Arena

▪ **Summer Outdoor Recreation**

- Candle Creek Trail System
- Emerald Bay
- Golf Country Geocaching Program
- Kenna Cartwright Park
- Little Shuswap Lake and the Three Sisters Waterfalls
- Macleod Hill
- Marble Range
- Merritt Trail System
- Mt. Scatchard Switchback Trails
- Rivers Trail
- Shuswap Unique Adventure Tours
- Trophy Mountain Meadows

▪ **Winter Outdoor Recreation**

- Big Bar Ski Trails
- Crowfoot Mountain Snowmobile Trail
- Kane Valley
- Logan Lake Ski Trails
- Owen's Oval
- Sun Peaks Dog Sled Tours
- Sun Peaks Snowmobile Tours
- Sun Peaks Terrain Park

▪ **Winter Ski Resorts**

- Clearwater Ski Hill
- Harper Mountain
- Mike Wiegele Heli Skiing
- Sun Peaks Resort

Data Source: Thompson-Okanagan Tourism Association - www.totabc.org



HEALTH

HOSPITALS

Health Centre	Barriere and District Health Centre
Teaching Hospital	No
Number of Beds	4
Outpatient Clinic	Yes
Contact	537 Barriere Town Road Barriere, BC V0E 1E0 Tel: 250-672-9731

Hospital	Royal Inland Hospital
Teaching Hospital	Yes
Number of Beds	224
Ambulatory Care	Yes
Contact	311 Columbia Street Kamloops, BC V2C 2T1 Tel: 250-374-5111

Data Source: Interior Health Authority – www.interiorhealth.ca

PHYSICIANS AND DENTISTS

Health Providers	Number
Physicians	2
Dentists	0
Ratio Physicians per 1000	1.12 : 1000
Ratio Dentists per 1000	0 : 1000

Data Source: Interior Health Authority – www.interiorhealth.ca





Colleen Hannigan
Chief Administrative Officer

District of Barriere

PO Box 219, 4936 Barriere Town Road, Barriere, BC V0E 1E0

Tel: 250-672-9751

Email: channigan@barriere.ca

www.barriere.ca



Northern Development Initiative Trust
Contact for information on financial incentives for manufacturing companies

www.northerndevelopment.bc.ca



**TRADE AND INVEST
BRITISH COLUMBIA**

Invest BC
Contact for investor site selection and expansion services.

www.investbc.com



Thompson-Nicola Regional District
Contact for information on services throughout the TNRD

www.tnrd.ca



Thompson-Nicola Film Commission
Contact for information on services throughout the TNFC

www.tnrdfilm.com