

Barriere FireSmart Program BC



Main Topics:

- What is the FireSmart Program?
- What does it entail?
- What are the plans?
- What is happening in the next months?

What is the FireSmart Program?



A provincial initiative aimed at reducing the risk of wildfire damage to homes, communities, and forests

What is the purpose of a FireSmart Coordinator?



The purpose of the FireSmart coordinator is to ensure that FireSmart activities are supported, developed, and implemented in accordance with Provincial guidelines as well as with the direction and policy provided by the local government, First Nation or Regional District

What does the FireSmart Program entail?

The 7 disciplines of FireSmart



Education

Training

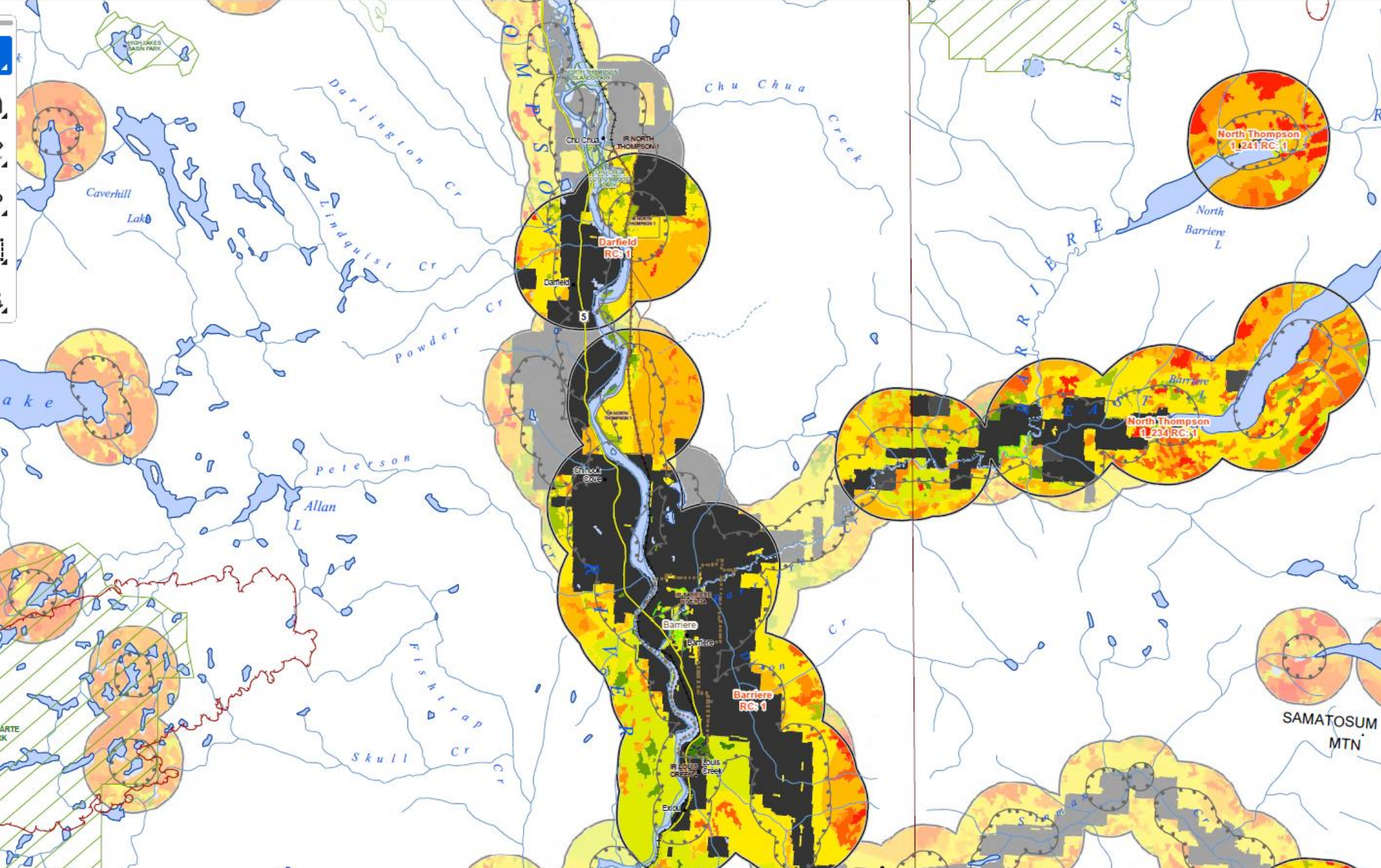
Vegetation Management

Interagency corporations

Emergency Planning

Developmental considerations

Legislation



51°20'N

- No Threat
- 1 - Low
- 2 - Low
- 3 - Low
- 4 - Moderate
- 5 - Moderate
- 6 - Moderate
- 7 - High
- 8 - High
- 9 - Extreme
- 10 - Extreme

- Populated Place / Locality
- Highway
- Main Road
- ++++ Rail Line
- River or Stream
- Lake
- - - Lake - Intermittent
- Quary or Reservoir
- Flooded Land or Marsh

* There is one 2018 Fire Perimeter (Alkali Lake R9194) in conjunction with the 2021 Fire Perimeters as revisions to these fires have not been incorporated. Some fire starts in adjacent incidents during the 2021 Season and therefore are only showing the largest all-encompassing perimeter.

MS/WC8

Disclaimer:
All information shown on this map is provided 'as is' without warranty or representation whatsoever. This map is intended for management planning purposes only and is not suitable for specific decision making. The map contains highly sensitive information and its use or widespread reproduction/duplication is strictly prohibited.

Fuel Treatment Disclaimer:
Compilation of operational fuel management data provided by the Wildfire but managed through the Community Resilience (CRI) program, and Reporting Silviculture Updates and Tracking System (RESULTS). For more information, contact the Centre, Local Government or First Nations Band. Source: current to June 11, 2021; will include all approved projects to this date. Polygons in this data may overlap.

PSTA 2021 Disclaimer:
The information presented within the Provincial Strategic Threat Analysis (PSTA) is derived from datasets and models that provide a provincial-level assessment of approximate relative wildfire threat across the land base.

It is intended to provide a strategic-level analysis of multiple factors that contribute to wildfire threats, but it is not intended to represent absolute, site-specific values. The Provincial Strategic Threat Analysis was created at a provincial scale, so users of this map need to confirm that the initial wildfire-threat rating assignment for an area is accurate by having a qualified professional validate the area at the forest stand level.

Any limitations of the Provincial Strategic Threat Analysis:
but not limited to the accuracy of: the Vegetation Resource Inventory (VRI); the 17 fuel types identified under the Canadian Behaviour Prediction (FBP) System; historical fire occurrence data; and the assumptions associated with the development of the head and spotting impact data layers.

The Provincial Strategic Threat Analysis does not assess wildfire threats on private land parcels, since the best determined through a site-level assessment such as The Provincial Strategic Threat Analysis was designed to assess forested land base, while the FireSmart hazard assessment considers individual structural components (e.g. roofing, fences, exotic plants and vegetation 10 metres and beyond structure — key areas linked to the spread of fire in a con Wildland Urban Interface (WUI) component of the Provincial Threat Analysis does not take this information into consideration.

Any components within the data that are derived from structure information are intended to provide a strategic-level analysis and are not intended to represent absolute, site-specific wildfire threat. Limitations of this Wildland Urban Interface data are related to the accuracy of: the Terrain Resource Inventory (TRIM) data; Integrated Cadastral Information Society

What are the plans for our community?

- In the past year, a Community Wildfire Resiliency Plan (CWRP) has been worked on in aligns with Forsite
- The completed CWRP is scheduled for March of 2025
- Depending on completion, the CWRP will be presented either in April 2025 or May 2025

Events for the upcoming months:

- February 16th, 2025 - Family Day weekend
- March 15th, 2025 - Lunch in at Senior Center
- April 19th, 2025 - Lunch in at Senior Center
- May 3rd, 2025 - Wildfire Preparedness Day
- May 24th, 2025 – Yard Waste Days, working alongside the District of Barriere

Comments and/or Questions?

Thank you for your time!